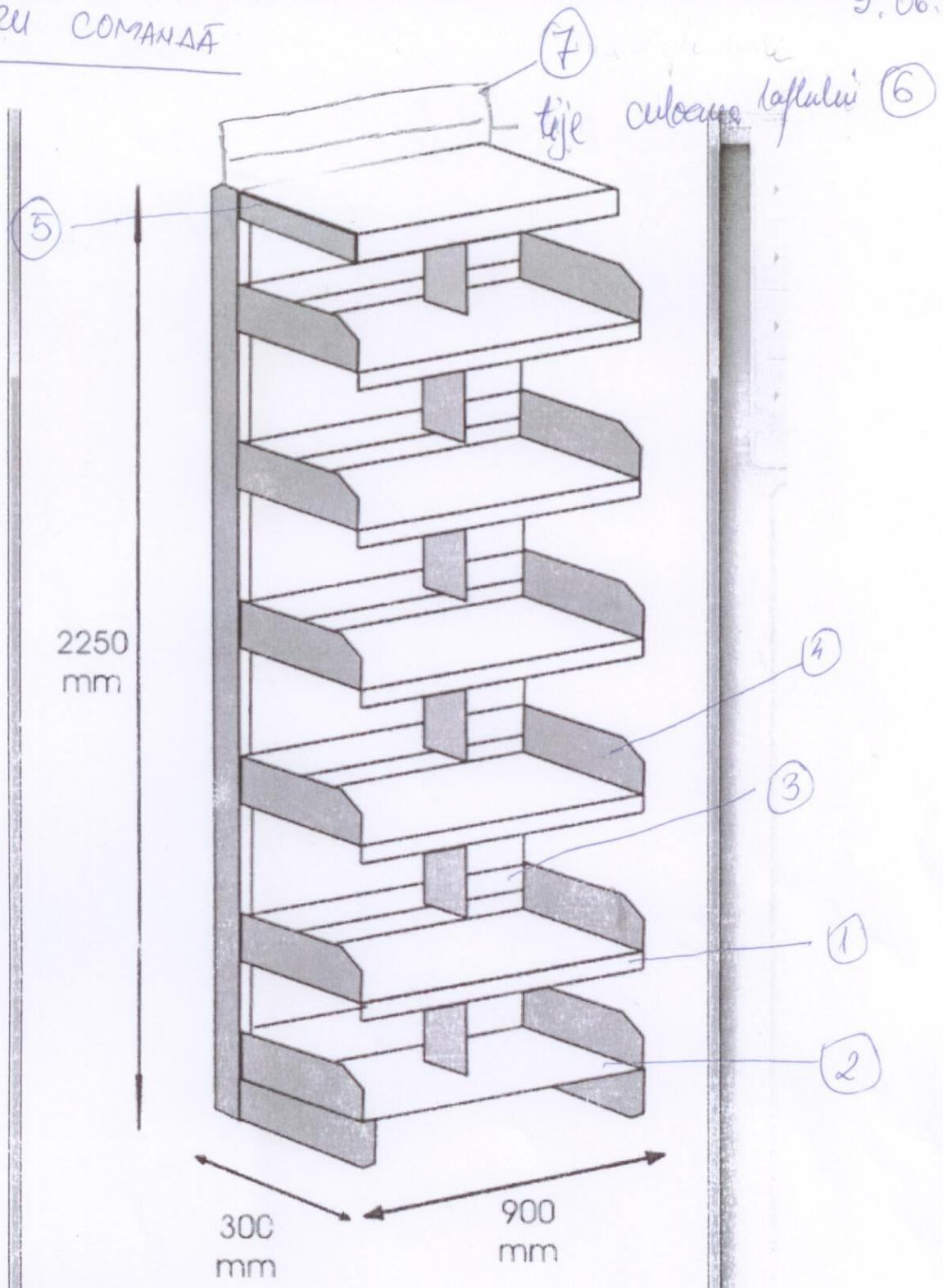
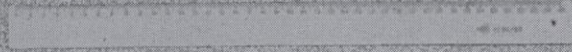


PENTRU COMANDA

9.06.2016

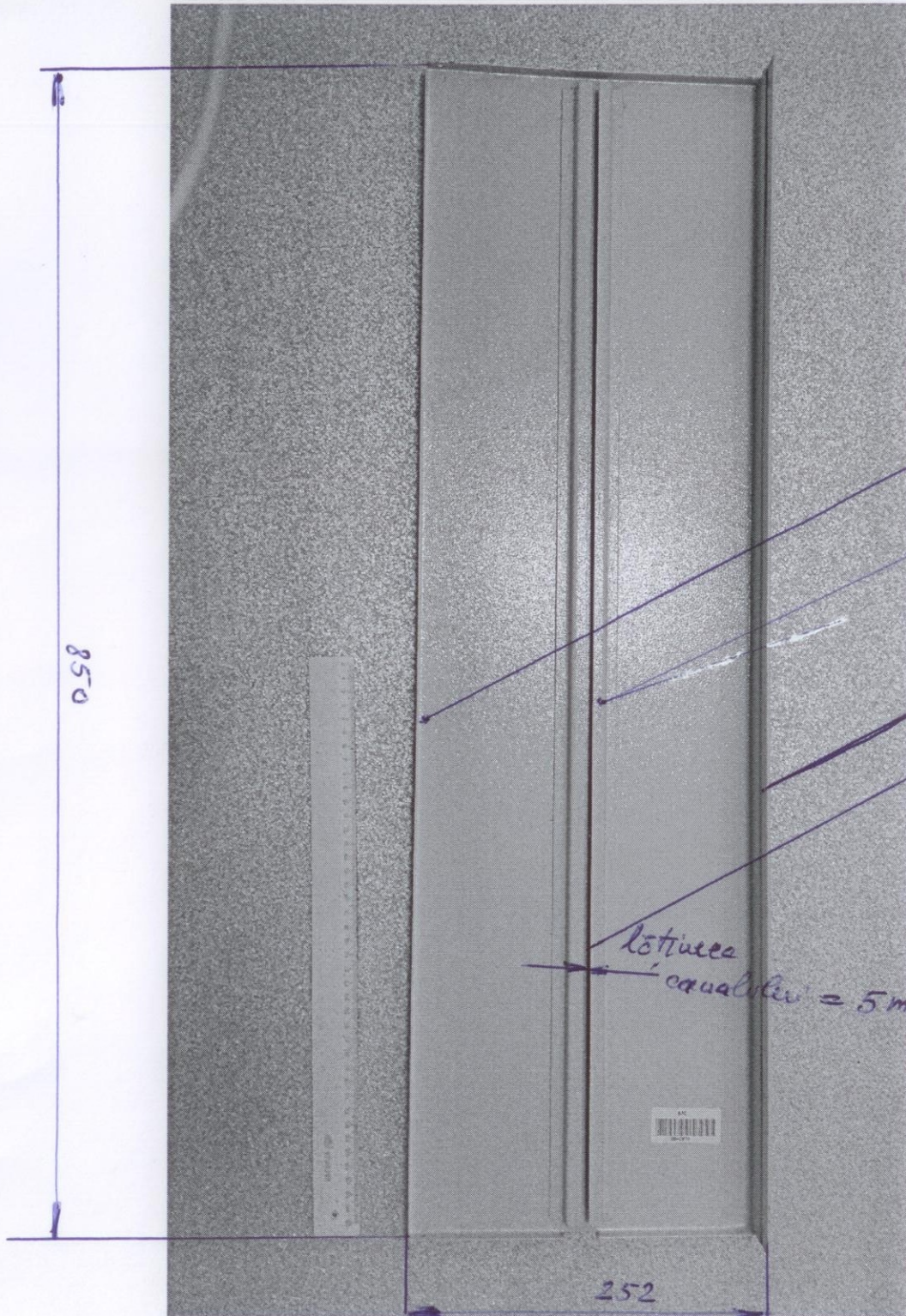


①



252

850



850

252

lotices = 25 mm

lotices = 10 mm

lotices = 40 mm

adornance = 10 mm

lotices / caudalier = 5 mm

(S)

②



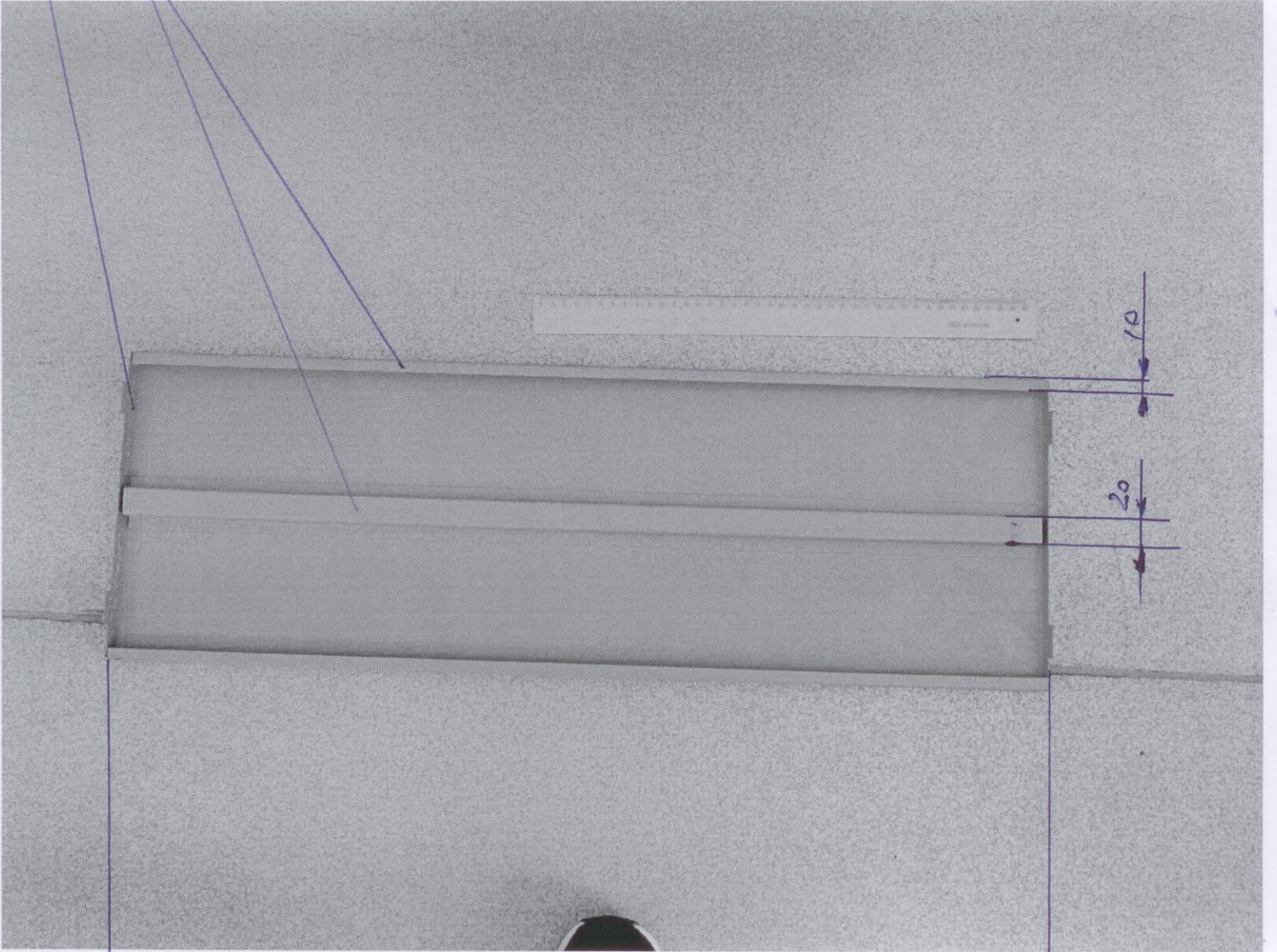
250

850

$t_{\text{refinera}} = 12 \text{ mm}$

$t_{\text{substrata}} = 10 \text{ mm}$

②

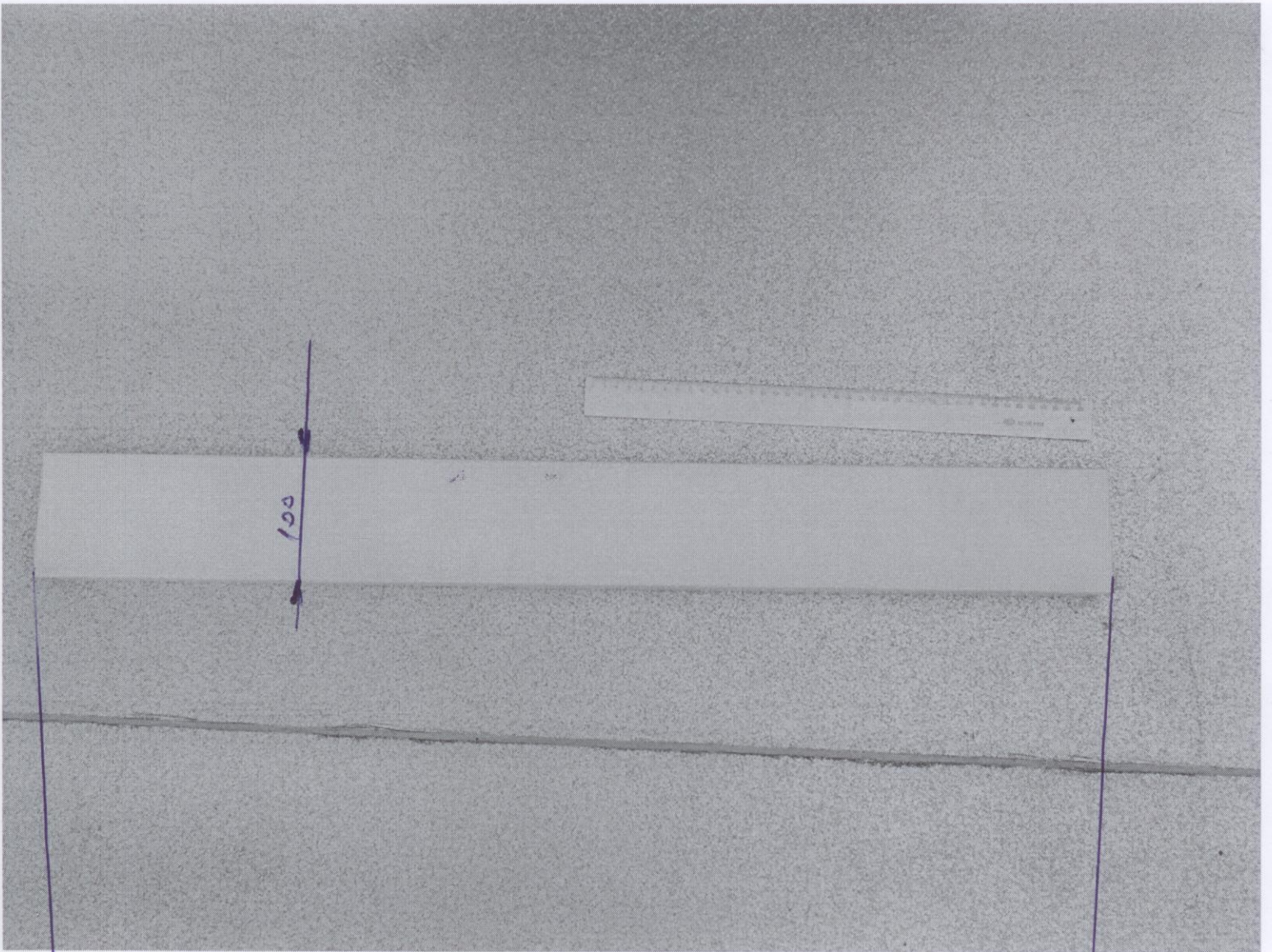


850

20

10

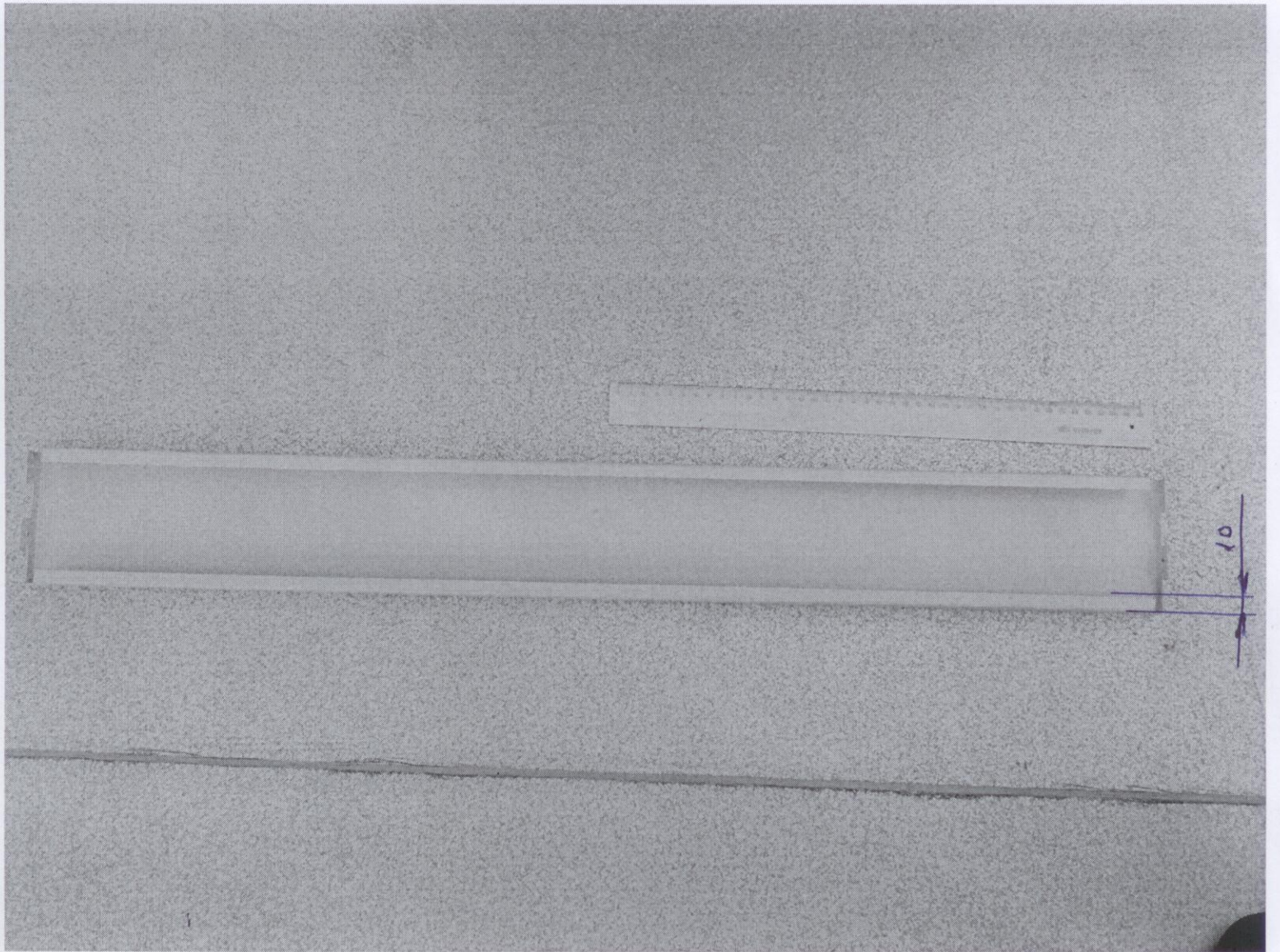
3



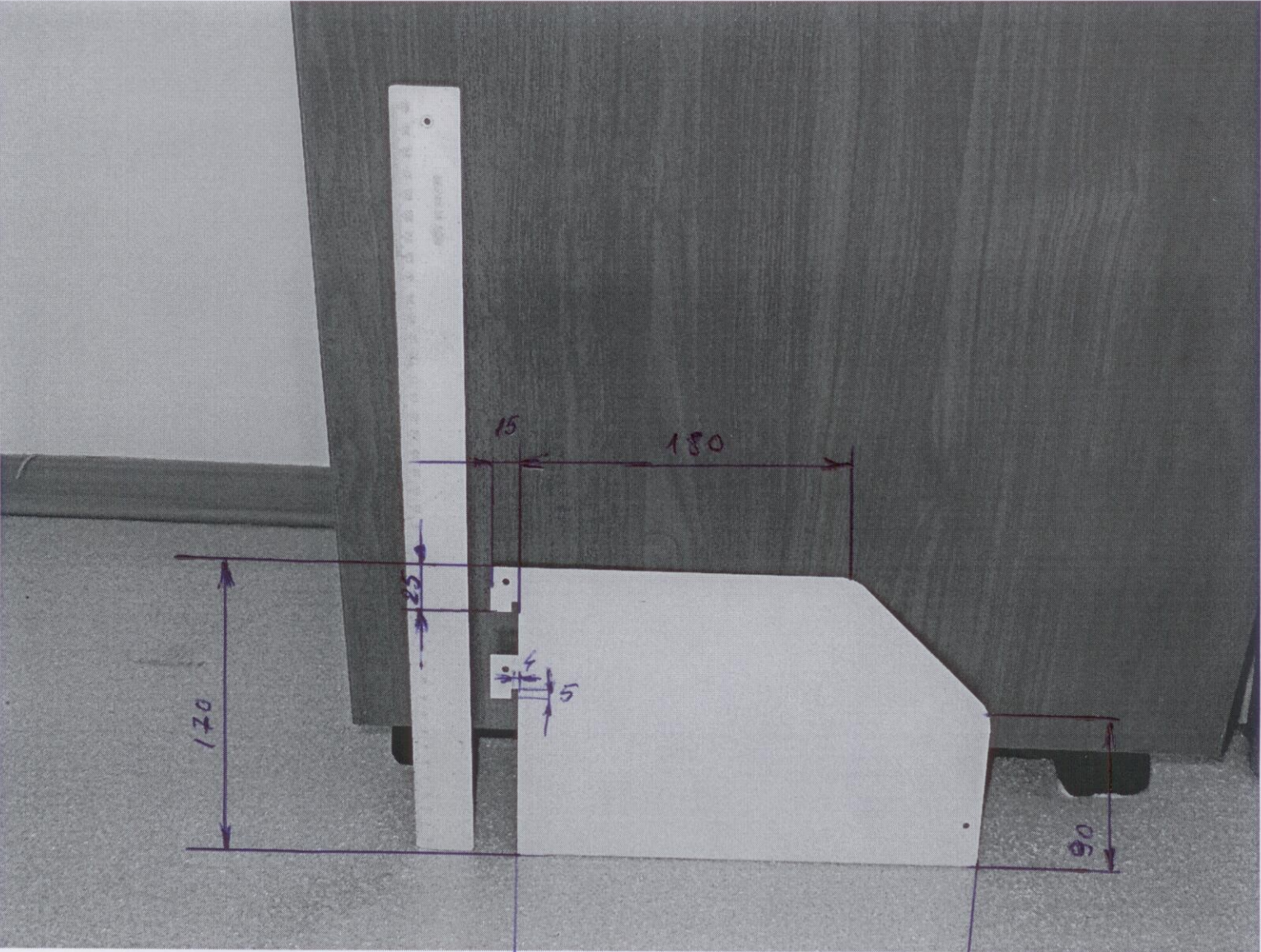
100

850

3



4



170

15

180

25

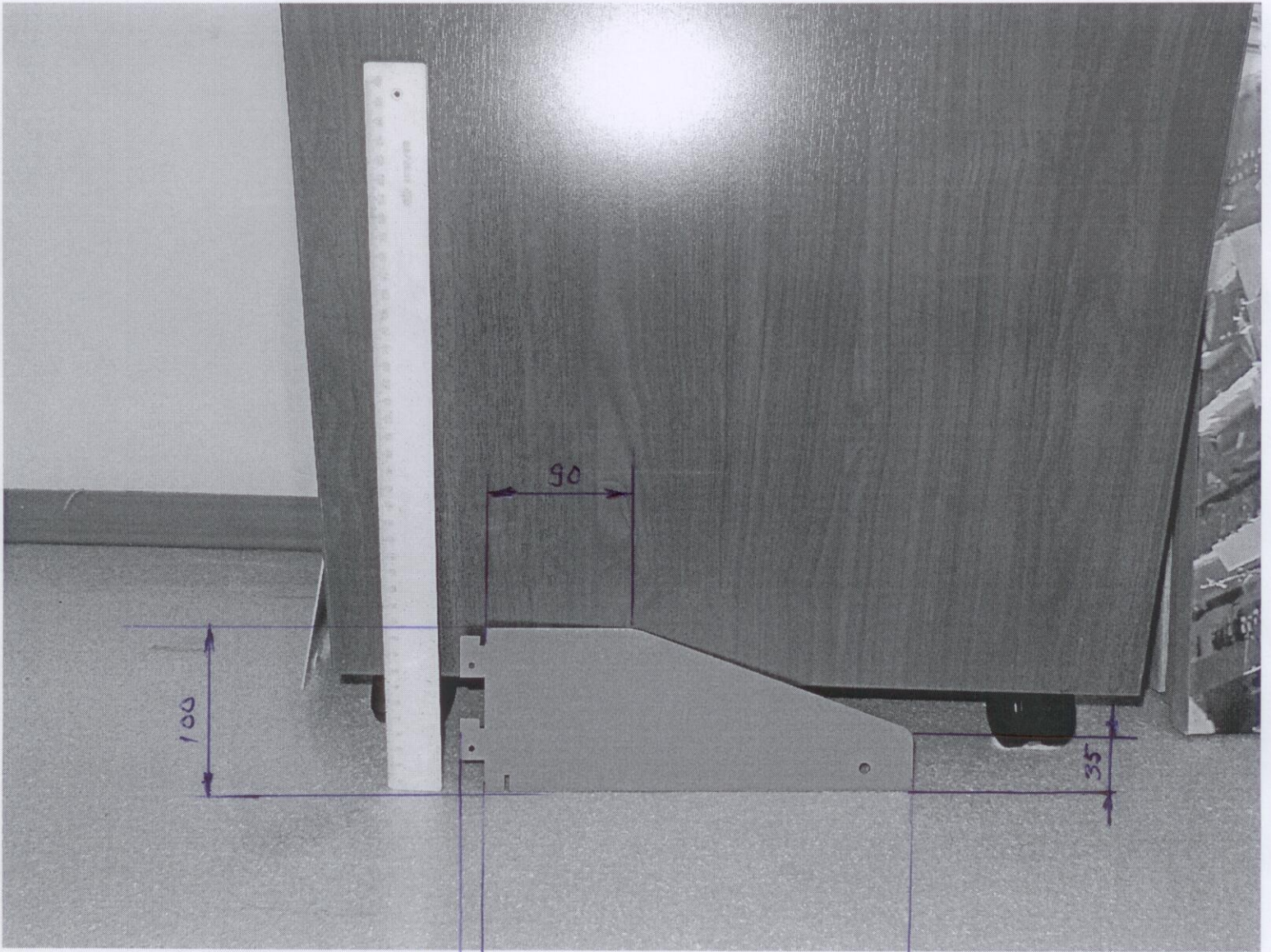
4

5

90

260

5



100

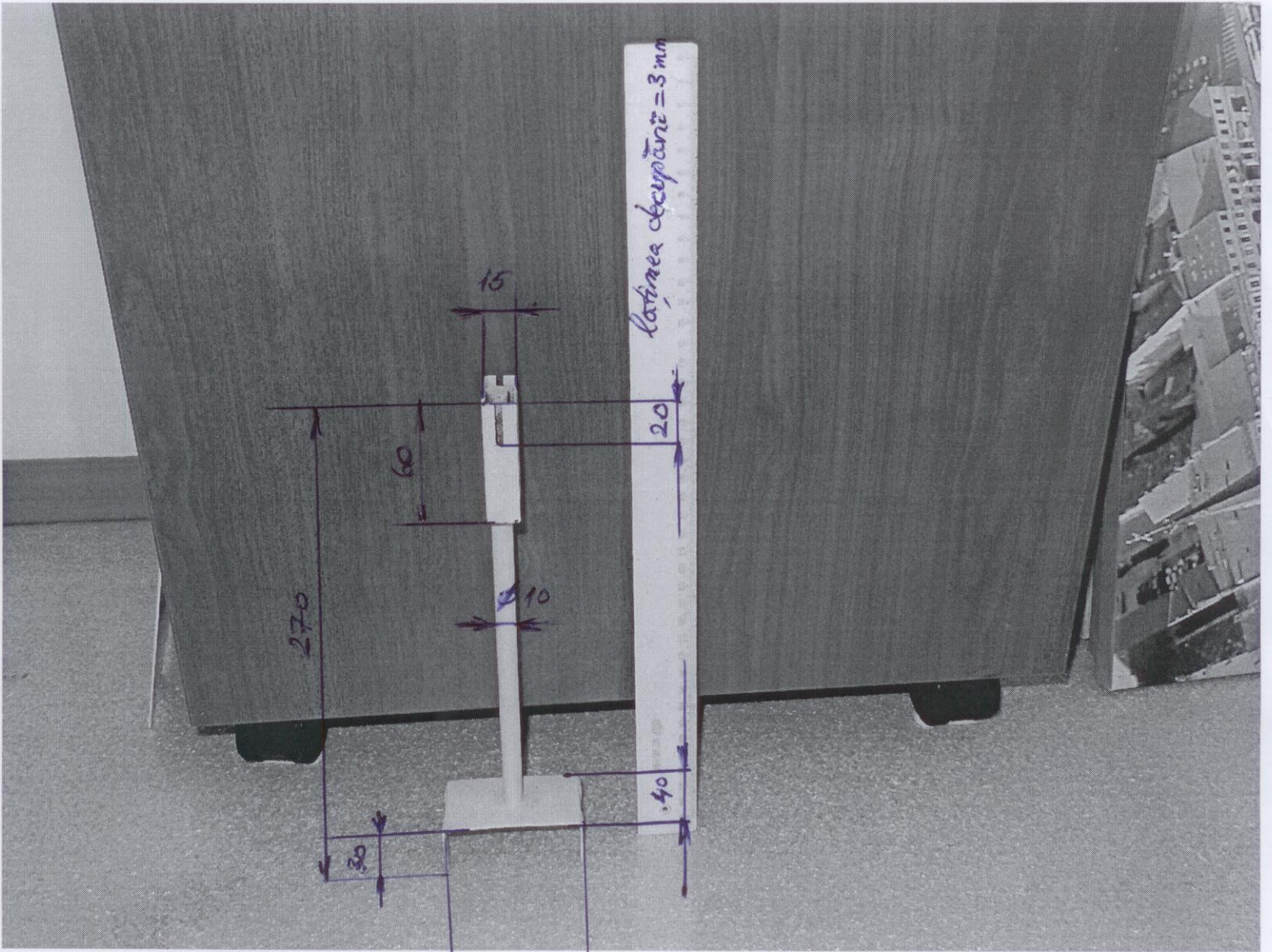
90

35

15

260

2



270

60

15

$\varnothing 10$

Lățimea decupării = 3 mm

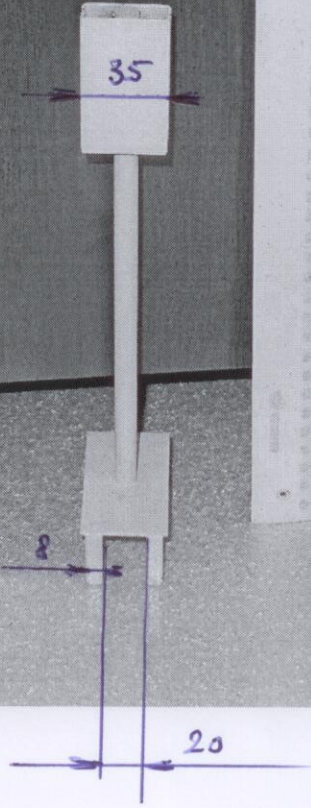
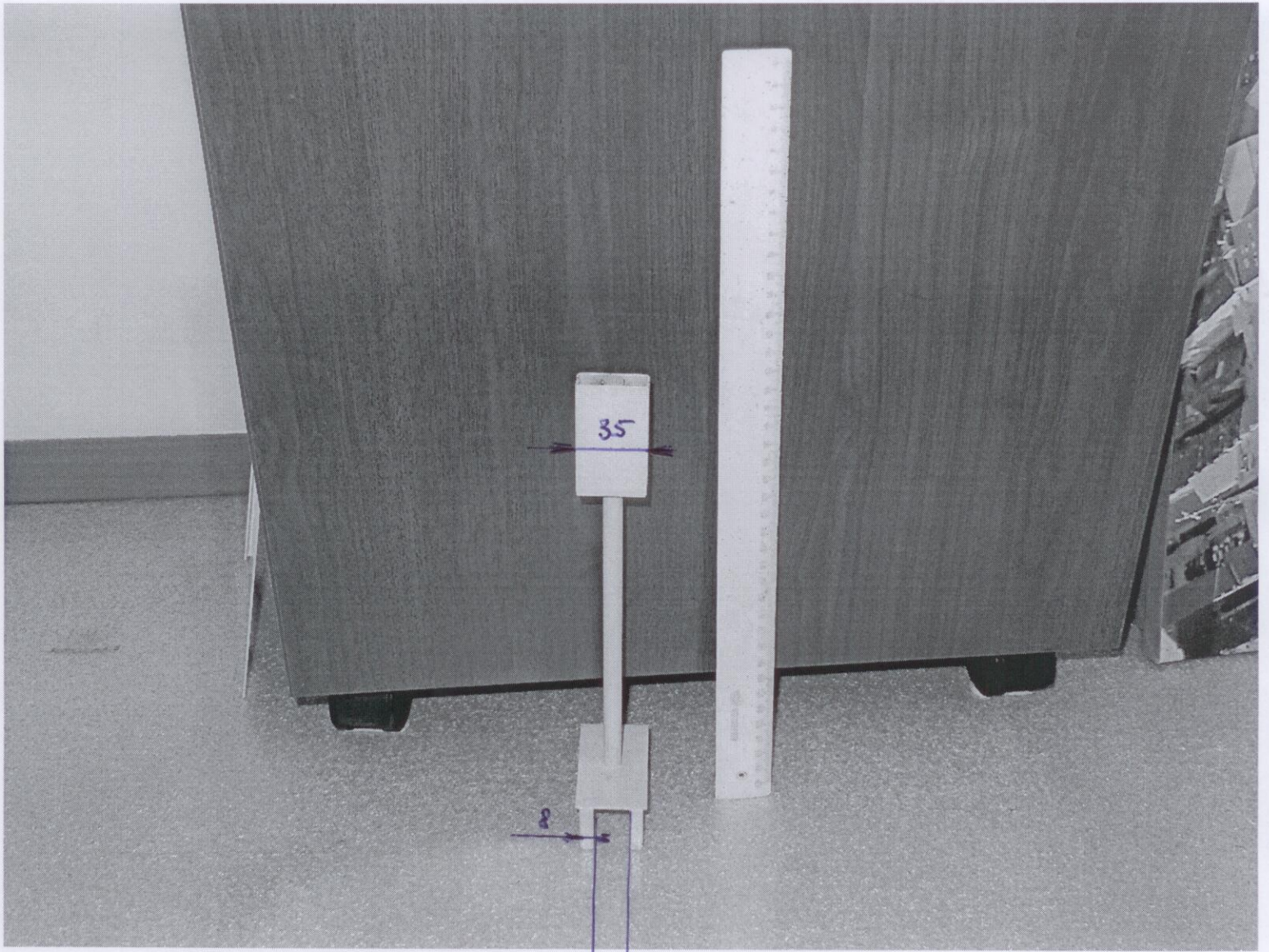
20

40

30

73

6



2

